



Camicri Cube Server

v0.1.*

May 2015 Release

Jake R. Capangpangan
Camicri Systems Philippines

<camicrisystems@gmail.com>

License

Camicri Cube Server (cube-server) is free software: you can redistribute it and/or modify it under the terms of the GNU General Public License as published by the Free Software Foundation, either version 3 of the License, or (at your option) any later version.

Camicri Cube Server (cube-server) is distributed in the hope that it will be useful, but WITHOUT ANY WARRANTY; without even the implied warranty of MERCHANTABILITY or FITNESS FOR A PARTICULAR PURPOSE. See the GNU General Public License for more details.

You should have received a copy of the GNU General Public License along with this program. If not, see <http://www.gnu.org/licenses/>.

About

Camicri Cube Server is a portable package manager, enabling Linux users without internet connection to download Linux applications to another computer with internet connection (Linux or Windows) and installs it back, offline.

Camicri Cube Server (2015) is the successor of Camicri Cube 1.0 (2013). Compared to Cube 1.0, which is written in C# programming language, Cube Server is written in Vala, an open source programming language by GNOME community. It doesn't use any GUI toolkits (GTK or QT). Cube Server uses HTML, CSS and Javascript, to be loaded by a web browser, as a front end UI.

Camicri Cube Server is a portable and cross-platform application. You can install it on both Linux or Windows, without installing any dependencies.

Camicri Cube Server is created by Jake R. Capangpangan, a Computer Science graduate, and currently working as Software Design Engineer at NEC Telecom Software Philippines (2014)

Problem:

You have a Linux computer and you want to have applications to be installed in your computer. The problem is that you don't have internet connection.

You have a Windows computer with internet connection, probably, a computer inside the internet cafe or your friend's computer.

Solution:

You can download Linux applications on that Windows computer using Camicri Cube Server, and you can go back to your Linux computer and install all of them, without the need for Linux computer to be connected to the internet!

But how? In this tutorial, we will show you how to make this happen :)

Requirements

Before we begin with the setup, please see to it that you have these files:

- 1) cube-server-installer*.zip - This contains the cube-server installer for Linux.
- 2) cube-server-portable*.zip - This contains a portable cube-server for Windows.

You can download both installers from Launchpad Download Page

<https://launchpad.net/cube-server/+download>

You can place them in your computer or flash drive for later use.

Let's Begin!

Cube Server Quick Setup

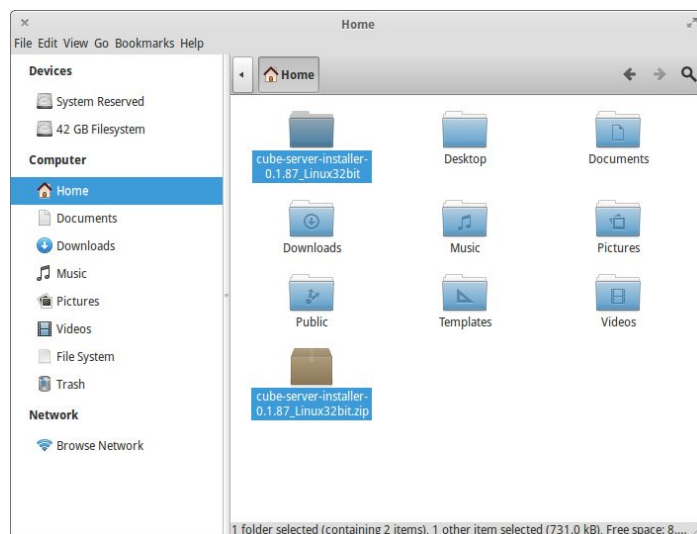
Install and Run cube-server on Linux

We will be going to install the cube-server on your Linux computer. From here, I will be using Elementary OS.

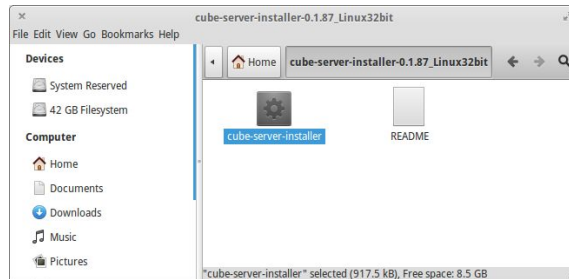


1. Open the file browser and copy the cube-server-installer*.zip to your HOME folder.

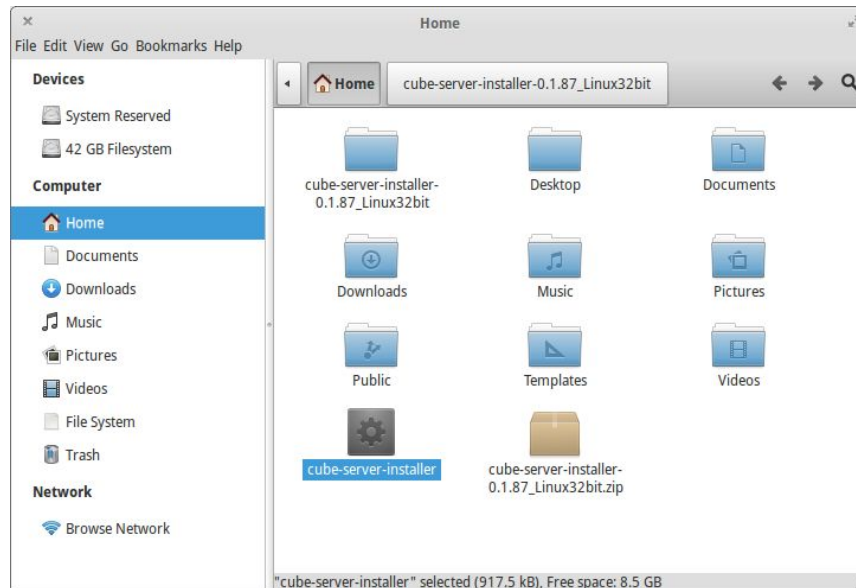
2. Right click on the cube-server-installer*.zip and click 'Extract Here'. A folder named cube-server-installer* will be extracted.



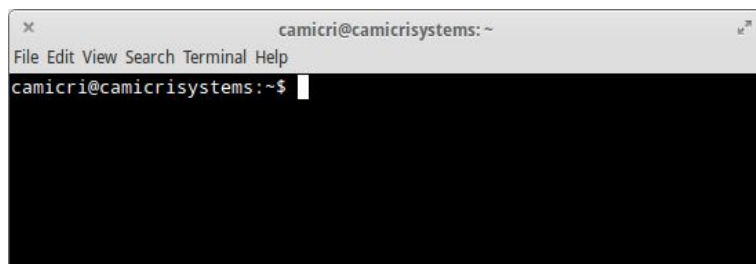
3. Open the cube-server-installer* folder and you will see a cube-server-installer file.



4. Copy the cube-server-installer file and paste it to your HOME folder.

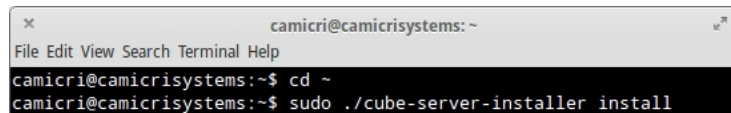


5. Open your terminal by pressing CTRL + ALT + T at the same time. A terminal will appear. If that didn't work, you can check your application menu or dash and search for 'terminal'.

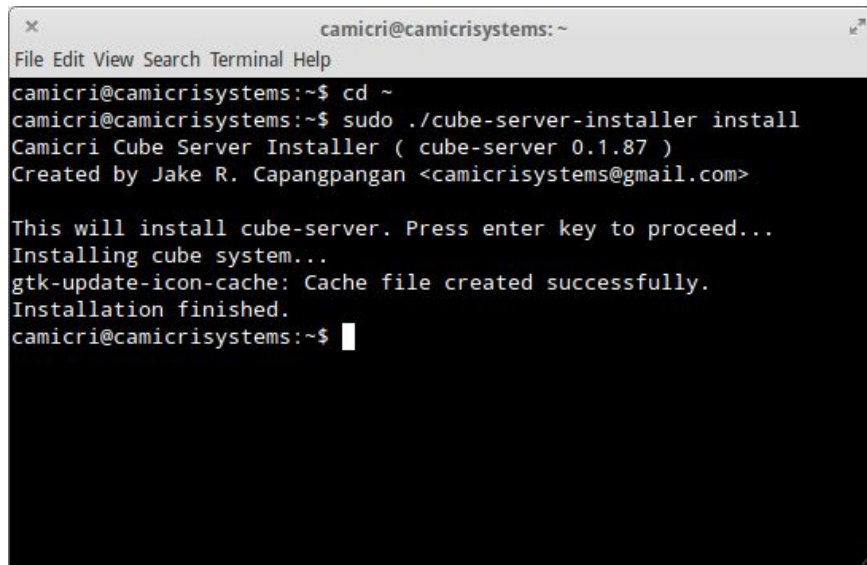


6. Type the following in the terminal

```
cd ~  
sudo ./cube-server-installer install
```



7. It will ask for your password. Enter your password and cube-server-installer will ask you if you want to continue the installation. Just press enter key.



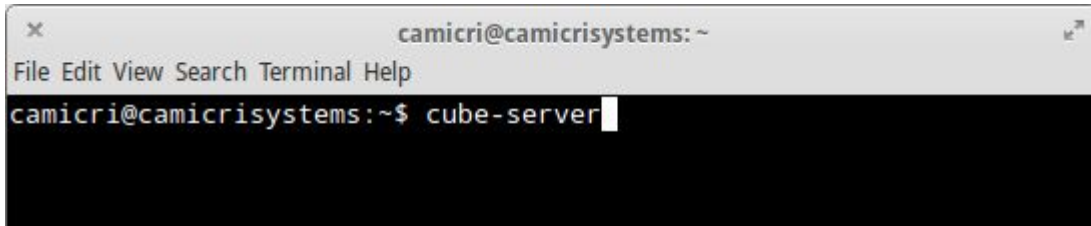
```
camicri@camicrisystems: ~  
File Edit View Search Terminal Help  
camicri@camicrisystems:~$ cd ~  
camicri@camicrisystems:~$ sudo ./cube-server-installer install  
Camicri Cube Server Installer ( cube-server 0.1.87 )  
Created by Jake R. Capangpangan <camicrisystems@gmail.com>  
  
This will install cube-server. Press enter key to proceed...  
Installing cube system...  
gtk-update-icon-cache: Cache file created successfully.  
Installation finished.  
camicri@camicrisystems:~$
```

8. Now, the cube-server is now installed. You can find in in your application menu or dash. Search for 'Camicri Cube'. In Elementary OS, you can see it under 'Applications => System Tools'. Click it to run.

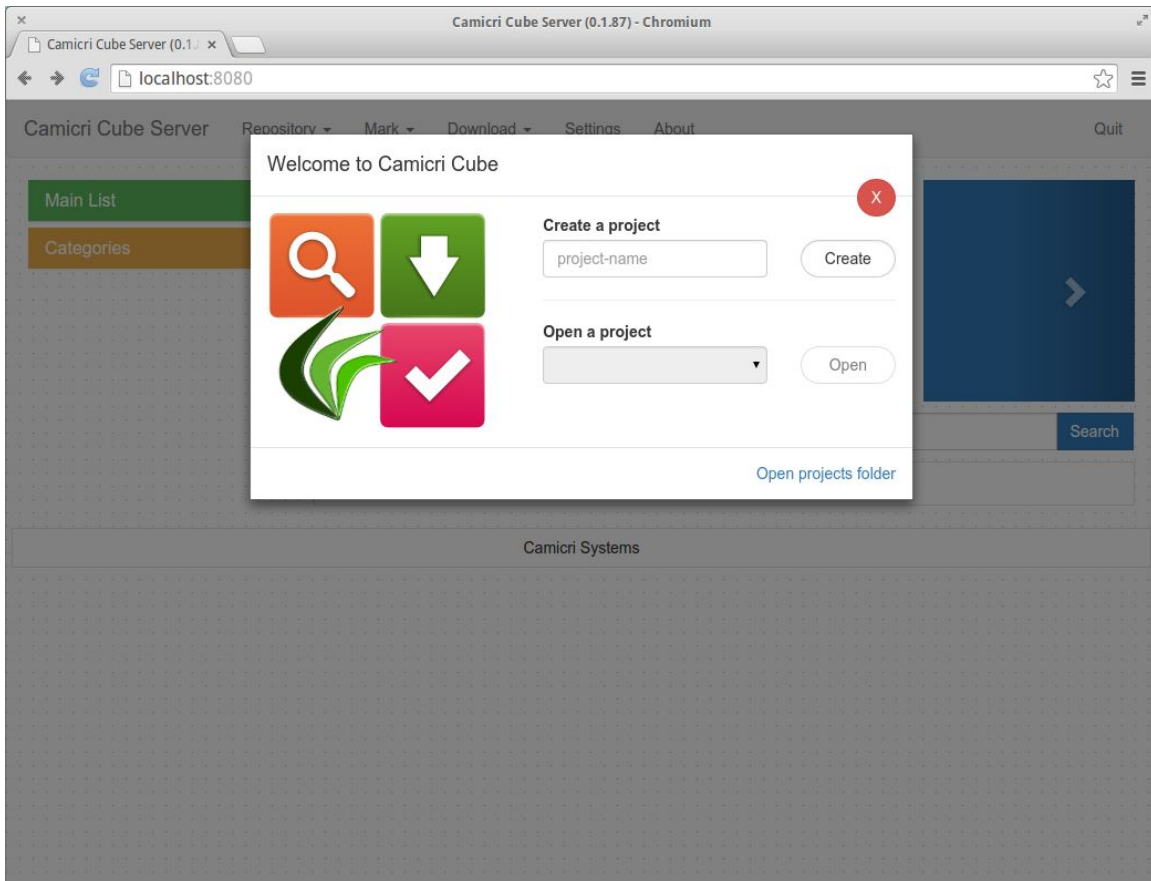


If you can't find it in the application menu, you can run it using the terminal (CTRL + ALT + T). Type the following and press enter key.

```
cube-server
```



After clicking the Camicri Cube (Server) in your application menu or dash, or after entering 'cube-server' in your terminal, your default web browser will automatically run and will show you the Camicri Cube Server.

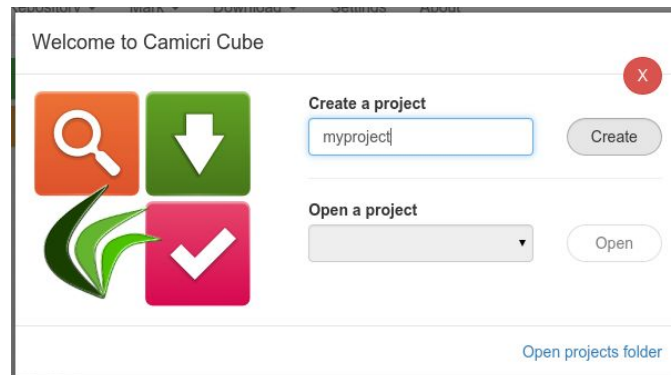


Camicri Cube Server uses a web browser for its graphical user interface :)

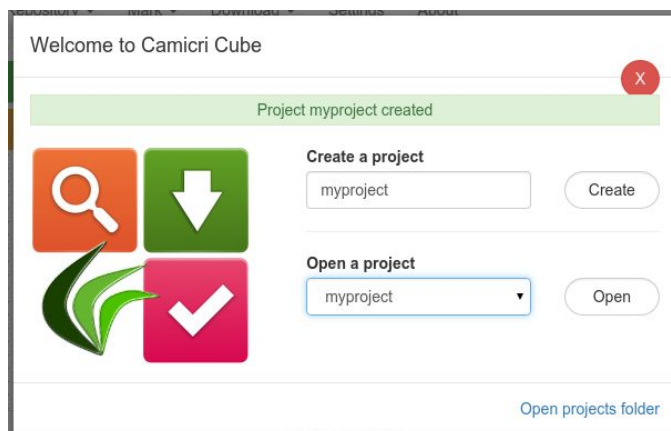
9. The first thing you can with Cube is to make a 'Project'. A Project will contain all information about your computer operating system, what applications you have, and what applications you can download and install. You will understand more what a Project is later in this tutorial.

To create a project, enter your desired project name (No spaces), and click the 'Create' button.

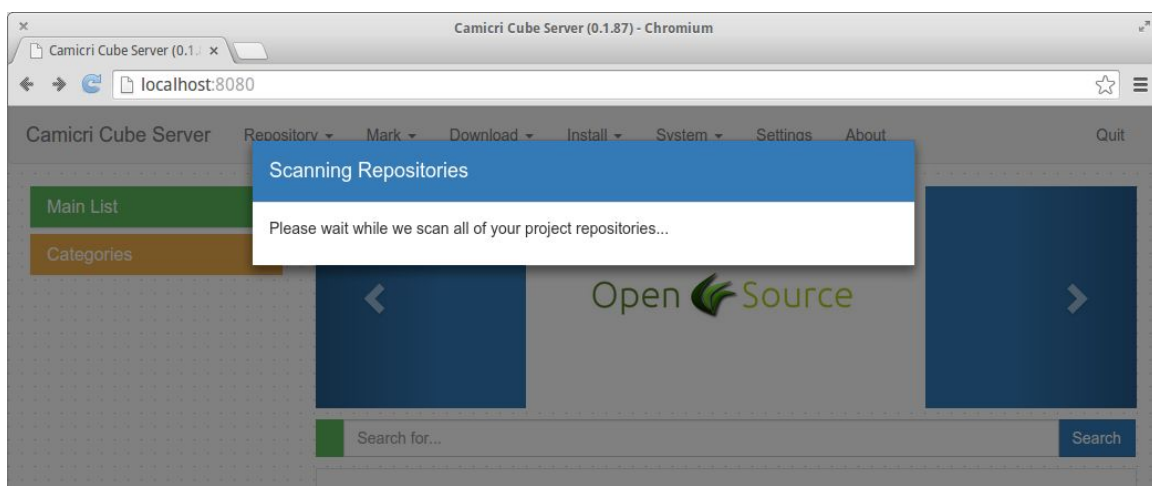
Here, I use 'myproject' as my project name.



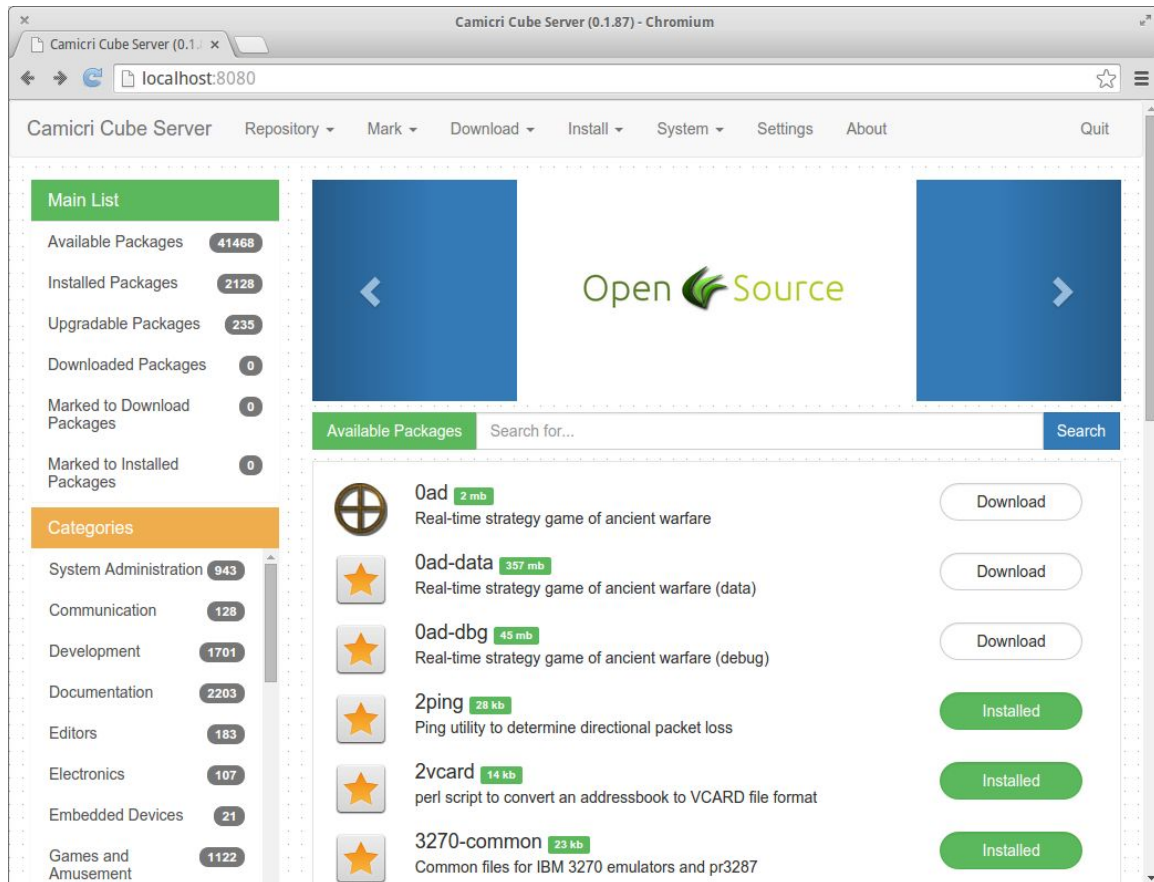
After creating a project, it will be listed in the drop down box. Select your project (In my case, 'myproject'), and click the 'Open' button.



10. Then the Cube will now scan your repositories. Repositories contains the list of applications you can download and install. It is only a list and not exactly the applications itself.

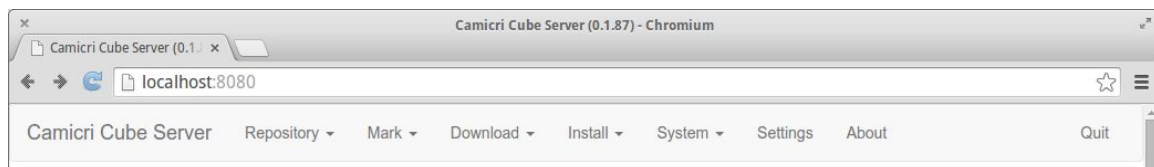


11. After scanning repositories, this is what you will see, the Camicri Cube Server main interface.

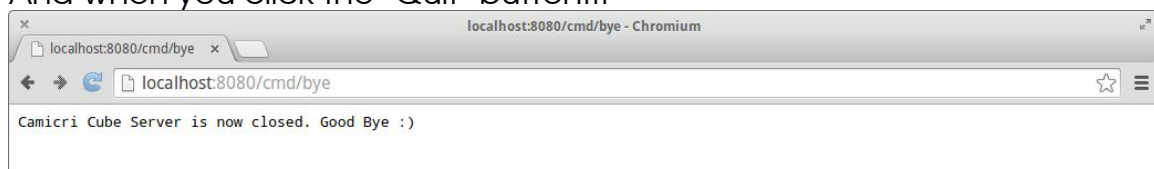


But since we don't have internet connection and nothing to install, we still can't use it for now.

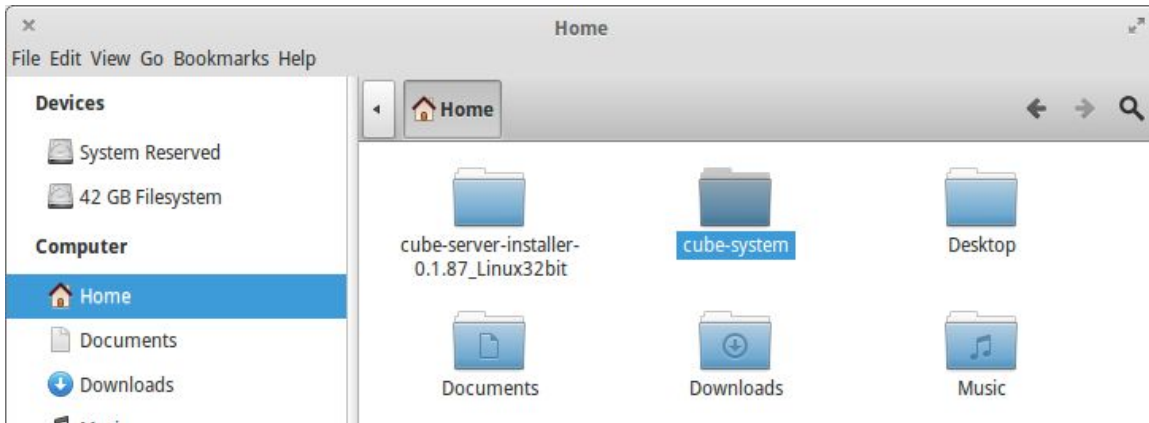
12. Close the Cube Server by clicking the 'Quit' button in the navigation bar. By the way, below image is the navigation bar of Cube Server.



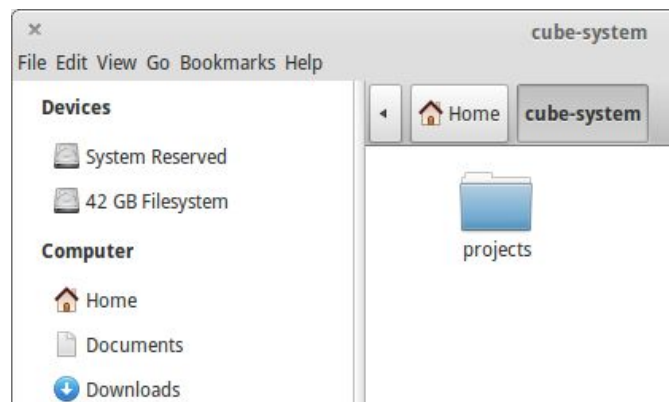
And when you click the 'Quit' button...



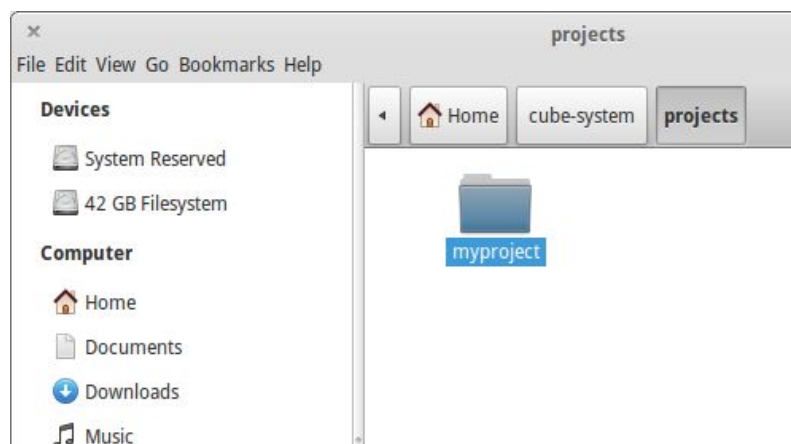
13. Open your file browser again and go to HOME directory. You will see a folder 'cube-system' there.



14. Open the cube-system folder, and then open the projects folder.



15. You will see a 'myproject' folder. This is the project we have created earlier. Copy the myproject folder to any removable device (Flash drive).



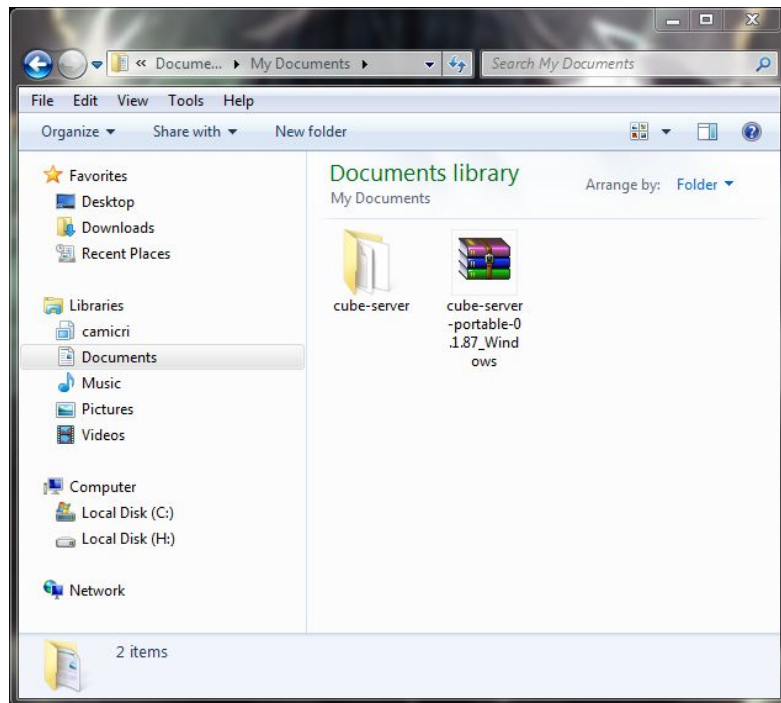
Now, hurry and go to a Windows computer with internet connection. In the next chapter, we will show you how to install Cube Server on Windows, opening your project there, and download new repositories and applications :)

Then!

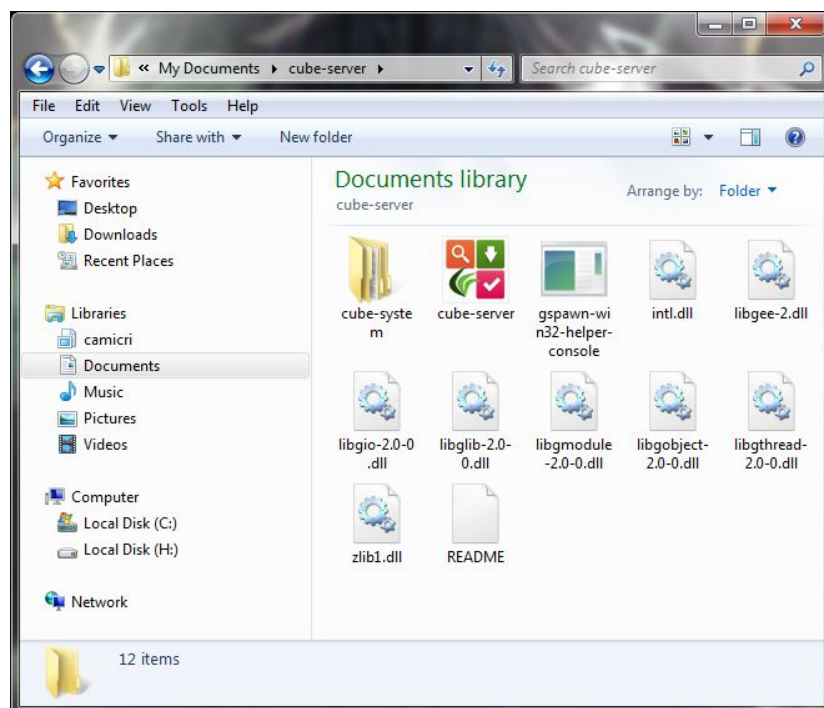
Setup Cube on Window

Install and run Cube Server on Windows

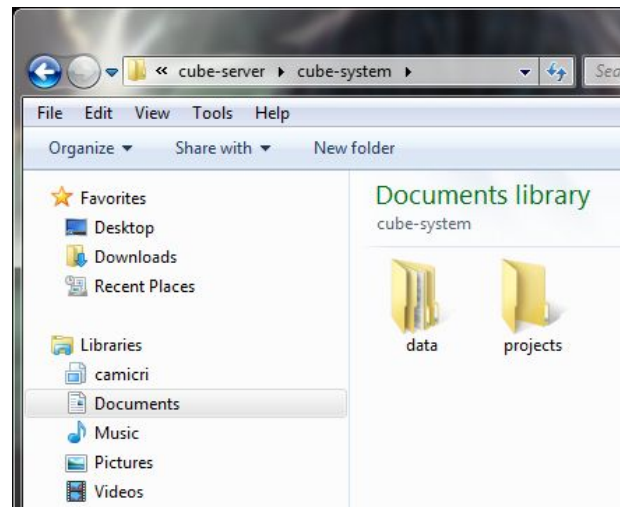
1. On Windows, open the file browser and copy the cube-server-portable*.zip to the 'Documents' folder. Extract the zip file and the cube-server folder will be extracted.



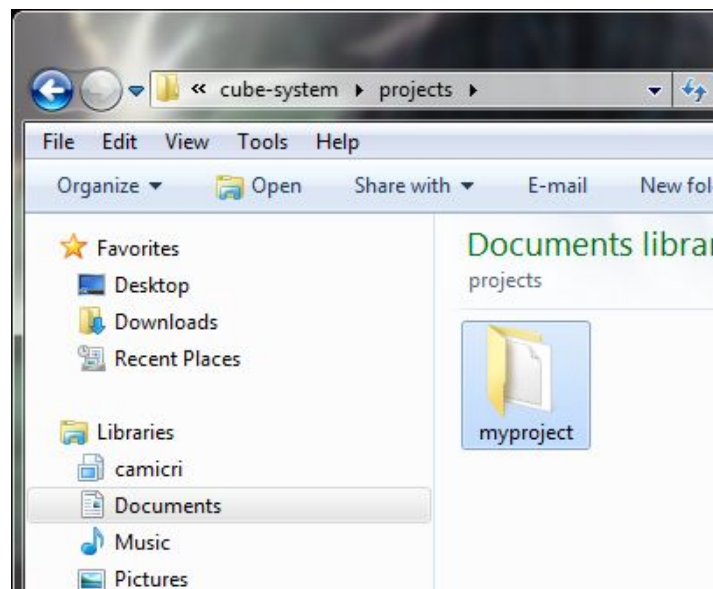
2. Open the 'cube-server' folder



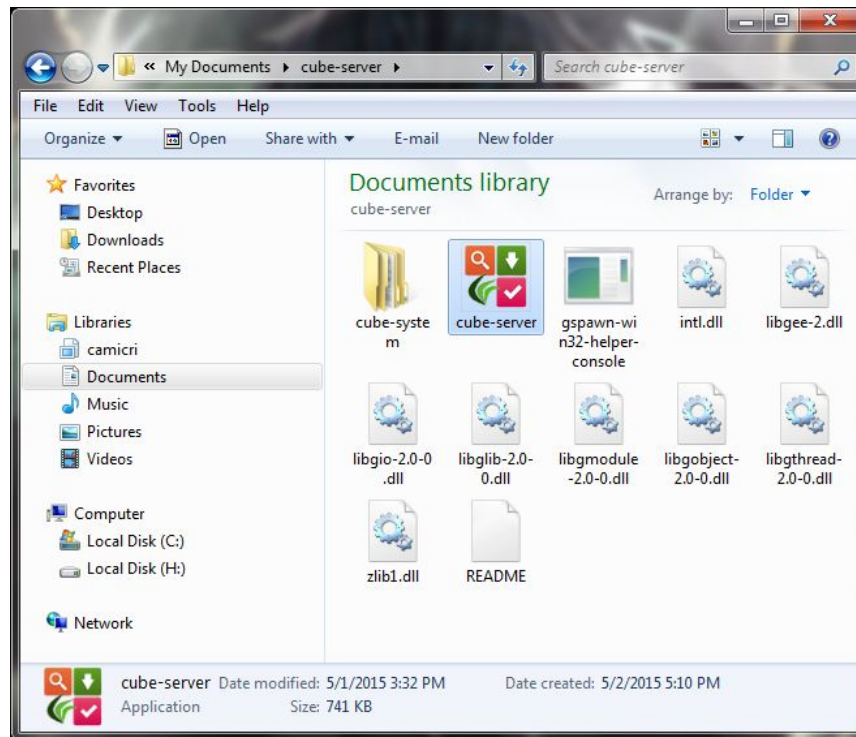
3. Open the 'cube-system' folder,



4. Open the 'projects' folder, and paste the 'myproject' folder from your flash drive.



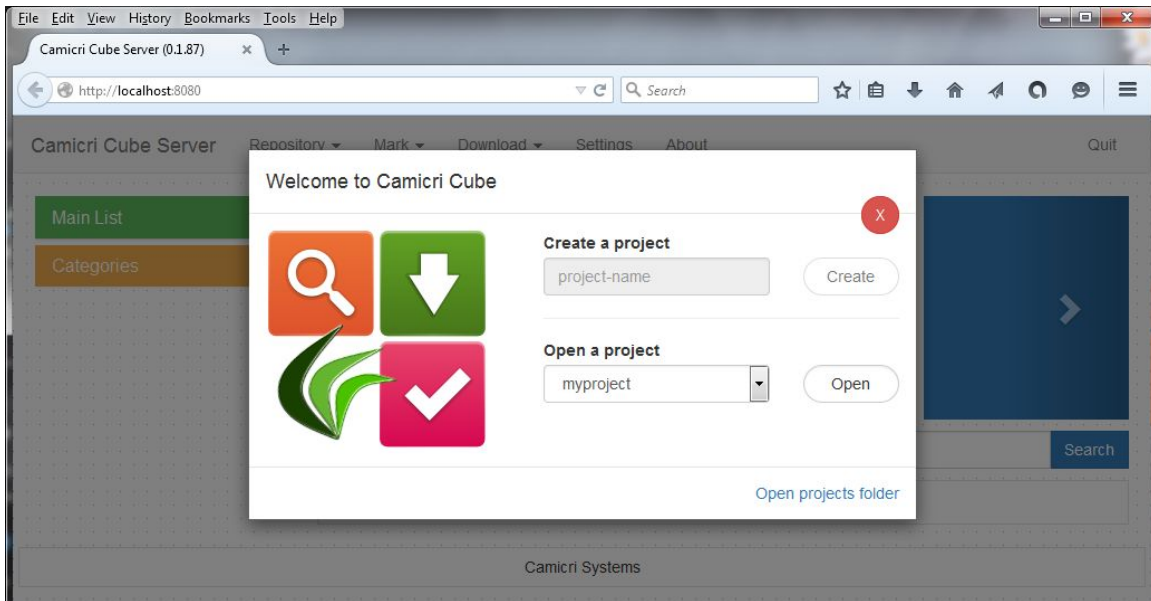
5. Go back to the cube-server folder. Double click the 'cube-server' to run Camicri Cube Server.



6. A firewall prompt will appear. Since the Camicri Cube is a Server application, it needs to establish a local network. Click 'Allow Access' to continue.

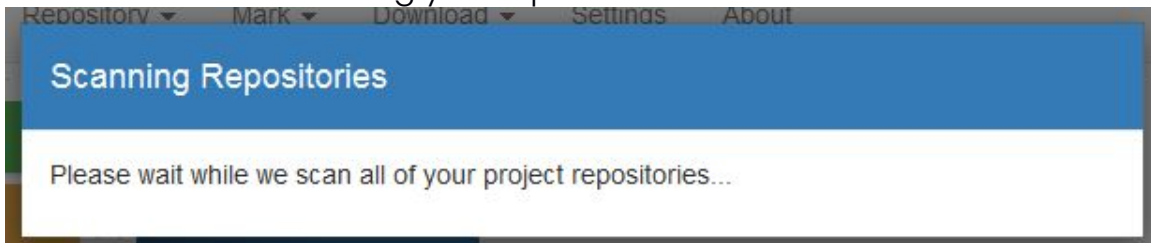


7. Your default web browser will run and will show the Camicri Cube Server. Your project 'myproject' is also listed in the drop down box.



8. Select 'myproject' in the drop down box and click 'Open'

9. Cube will start scanning your repositories afterwards.



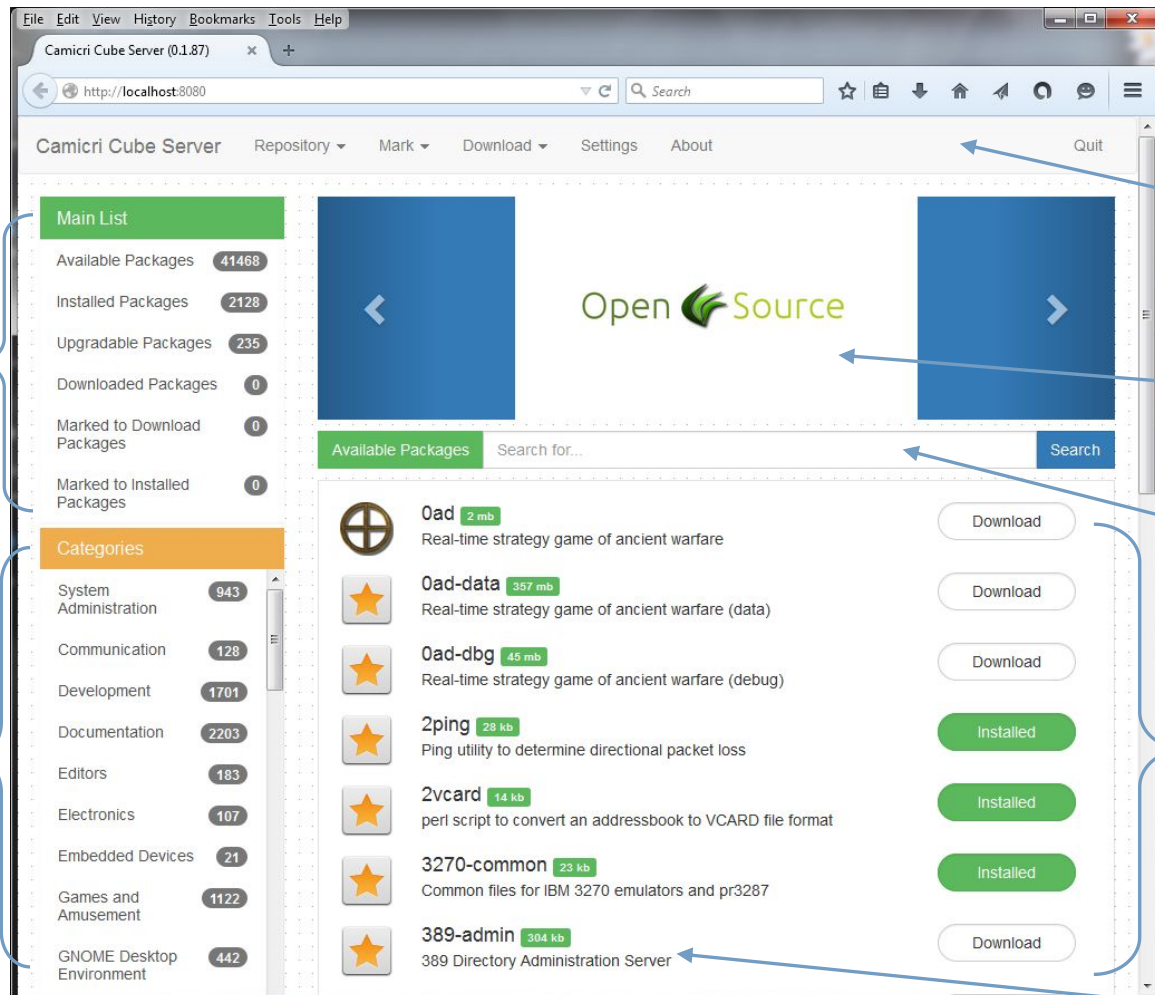
In the next chapter, we will show you how to download latest repositories, upgrade your outdated installed applications, and downloading new applications :)

Download in Progress!

Downloading new repositories and applications

Download repositories, upgrade outdated installed applications,
and download new applications on Windows

And finally, we are now going to download new repositories, upgrade outdated installed applications and download new applications! But before anything else, I would like to show you first the Camicri Cube Server graphical interface, and the usage of each units inside it.



Navigation bar - Also known as the toolbar of Cube Server. Contains all basic commands you can do in Cube Server (Download, Install, Update, Settings)

Featured Apps Carousel - You can see here the suggested applications and PPA's that might be useful to you

Application Search Bar - You can type here the application name you want to find. This search bar will search all applications that 'starts with' the name you typed.

Application List - All application items will be listed here, when you search an application or click an item under 'Main List' or 'Section/Categories List'. The Application List itself is an infinite scrolling list, which means, when you scroll down, the Application List will automatically loads the next 10 Application Items.

Application Item - This is a representation of a single application. It contains the name, description, size, and the icon (If available). When you hover your mouse in the Application Item, a 'Check' button will appear, which means, if you want to

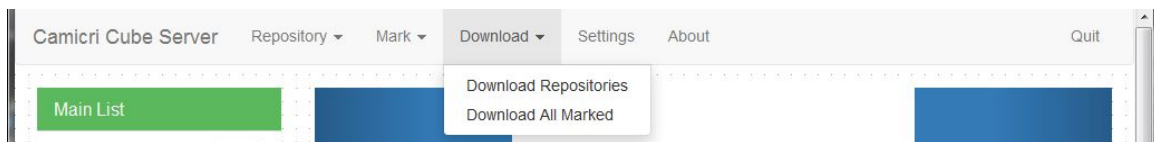
'Mark' it or not for download/install.

Main List - List to show you all available, installed, upgradable, downloaded, and marked packages.

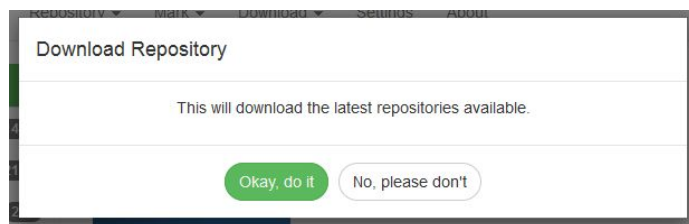
Section / Categories List - List for all available section/categories of an application. When you click an item under this list, it will automatically search for applications under the specified category and will be listed in the 'Application List'.

Now that you have successfully opened your project, we can now start downloading applications. But before that, we must download latest repositories first. This is to ensure that we have the latest list of applications.

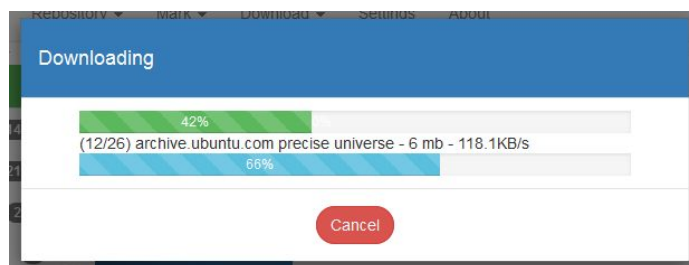
1. On the navigation bar, click 'Download => Download Repositories'



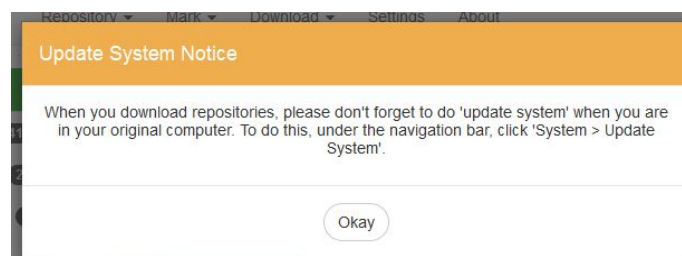
2. It will ask you if you want to download repositories, click 'Okay'



3. A download dialog will appear, showing the download progress of each repositories being downloaded.

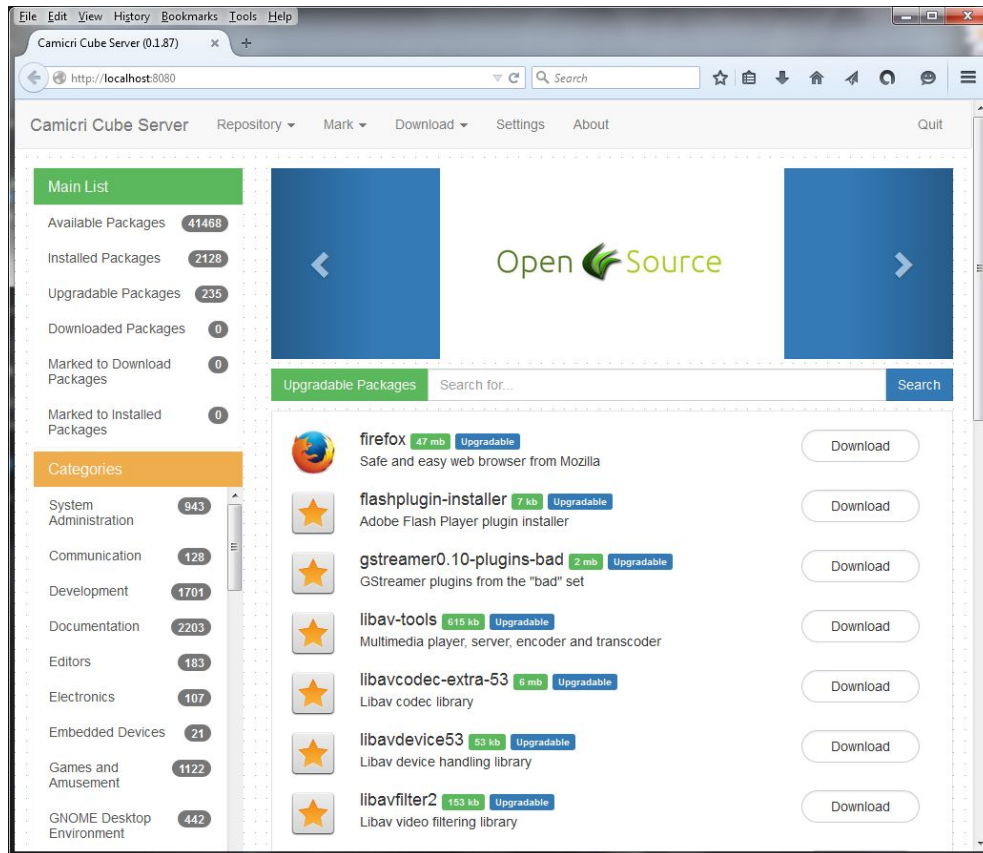


4. After the download of repositories, a 'Update System' notice will appear. It is a command under the navigation bar 'System => Update System'. You must do this when you go back to your original computer, so that your computer will know the latest list also.

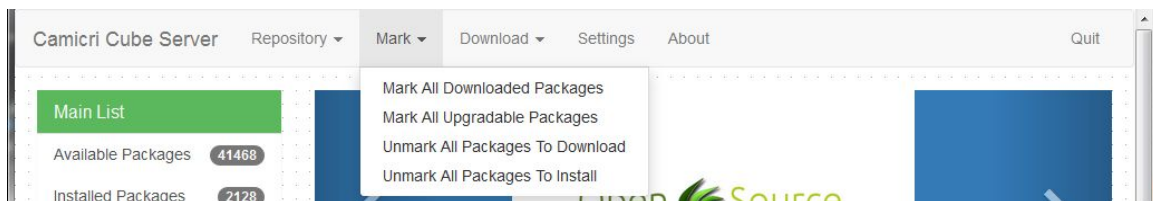


'Download Result' modal will appear if some repositories failed to be downloaded.

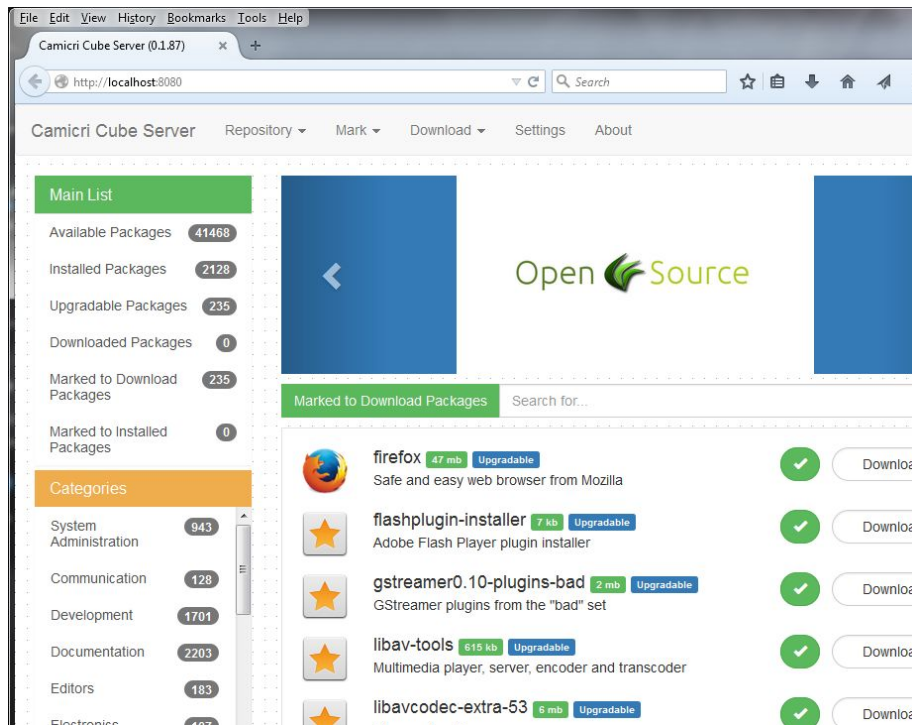
5. After downloading repositories, we now need to download applications with available updates. See the 'Main List', we have 235 outdated packages that needs to be updated. Click the 'Upgradable Package' under the Main List to show all applications that needs to be upgraded.



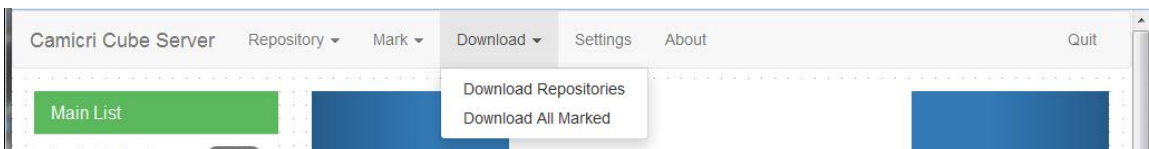
6. To download application updates, on the navigation bar, click 'Mark => Mark All Upgradable Package'



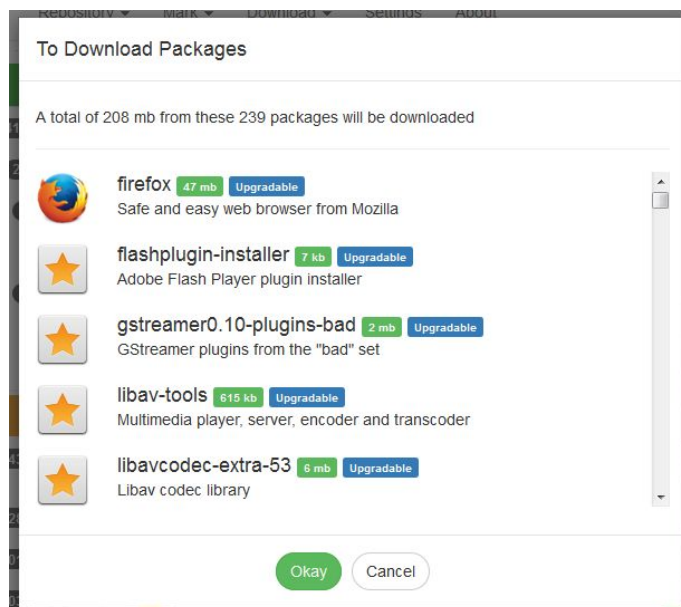
7. In the Main List, click 'Marked to Download Packages'. All applications that are marked for download will be listed in the Application List. You can hover your mouse to an Application Item and the 'Check' button will become 'X' button, click it to unmark that application.



8. In the navigation bar, click 'Download => Download All Marked' to download all marked applications.



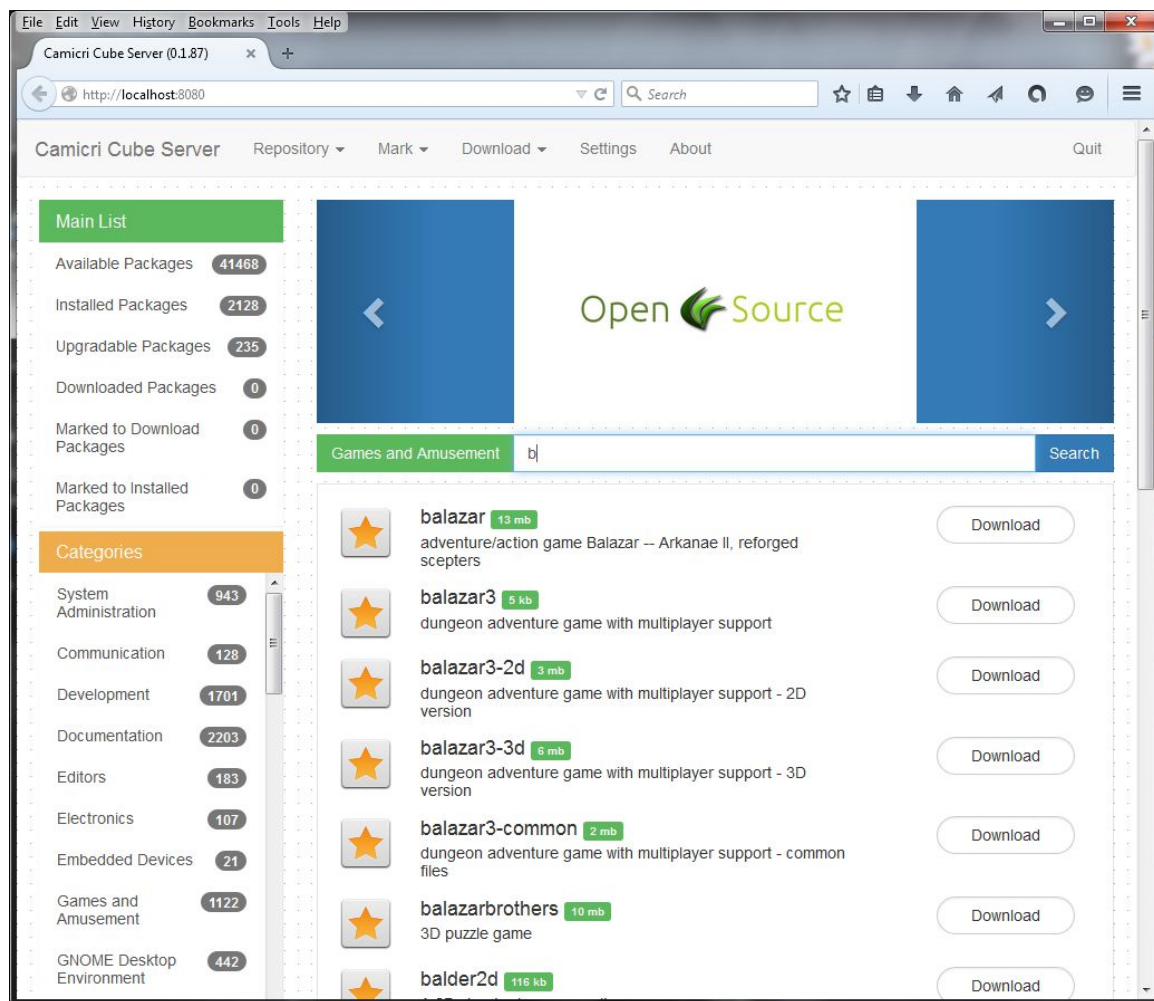
9. A dialog will show all applications to be downloaded. Click 'Okay' to download these packages.



For this tutorial, I skipped downloading of application updates, it is because it will take long time and I'm in a rush in doing this tutorial :(But it is HIGHLY RECOMMENDED that you download these application updates! Especially to those users with fresh Linux installation.

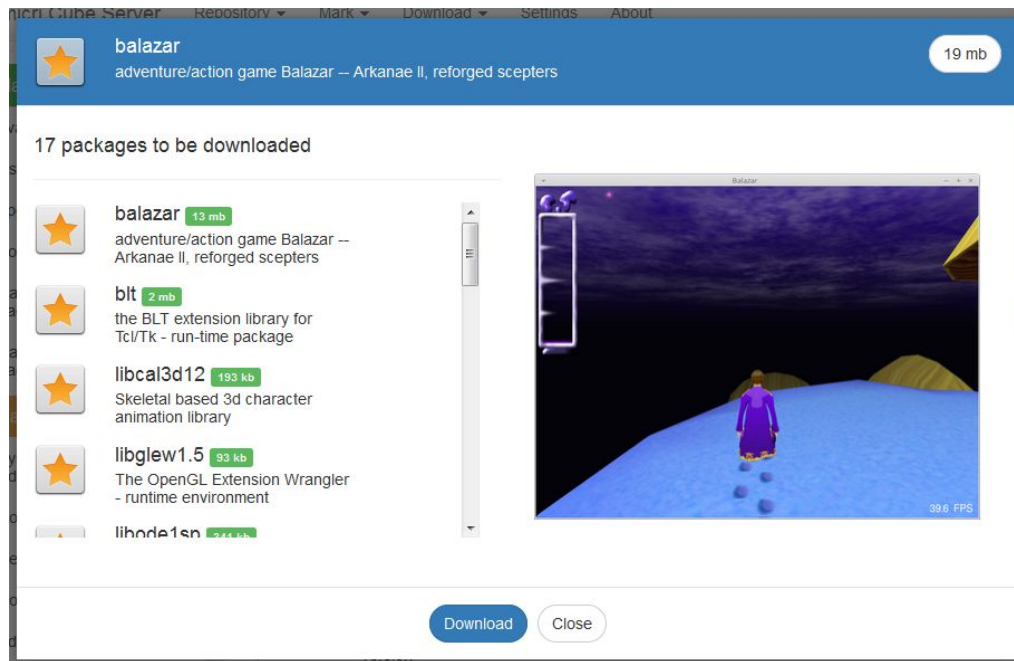
10. Now, we can now download Linux applications! Yeah! You can search for an app using the search box or checking for each categories under Sections/Categories List. In the below image, I typed "b" in the search bar and It shows all packages that starts with "b". Notice also that all applications being listed are under the 'Games and Amusement' category.

When you click a specific item in the Section/Categories, Cube will search for packages under that specified category. And when you search an application, It will only show you the matched application under that specified category. If you want to search for all packages under any category, click the 'Available Package' under the Main List and search again.

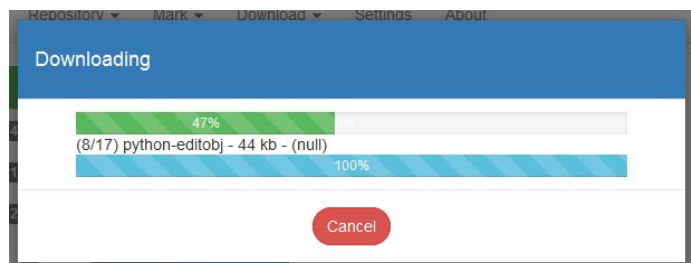


11. I want to download 'balazar' app, so I will click the 'Download' button.

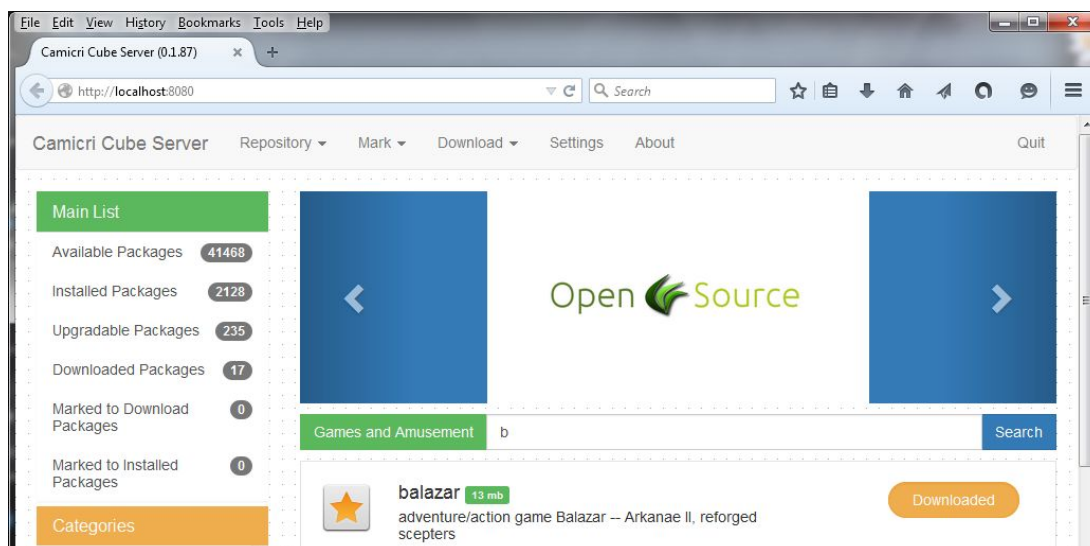
12. The preview dialog for balazar will appear. This shows the screenshot of the application (If available), and the package dependencies of this application. Package dependencies means all application needed by the 'balazar' app in order for it to work.



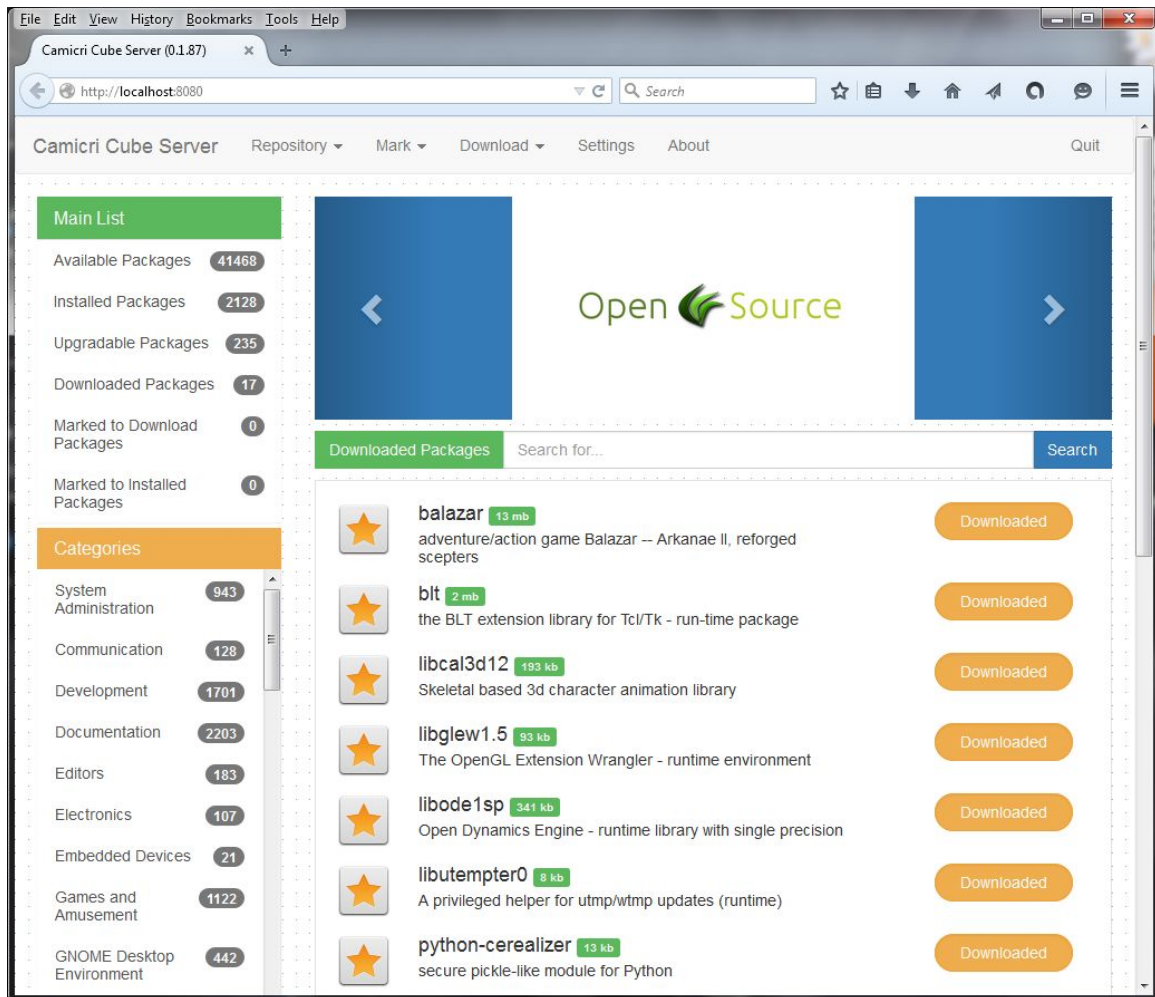
13. Click the 'Download' button, and a download dialog will appear, showing the download progress for 'balazar'.



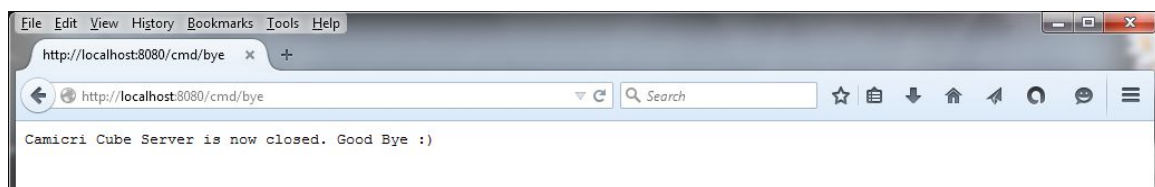
14. When the download is finished, the 'Download' button of the 'balazar' app will become 'Downloaded' button.



15. You can also check for all downloaded applications by clicking 'Downloaded Packages' under the Main List.



17. After downloading applications, you can now close the Cube Server by clicking 'Quit' in the navigation bar.



In the next chapter, we will show you how to update the repositories of your Linux computer and install all of your downloaded applications :)

Go back now to your Linux computer and proceed to the next chapter.

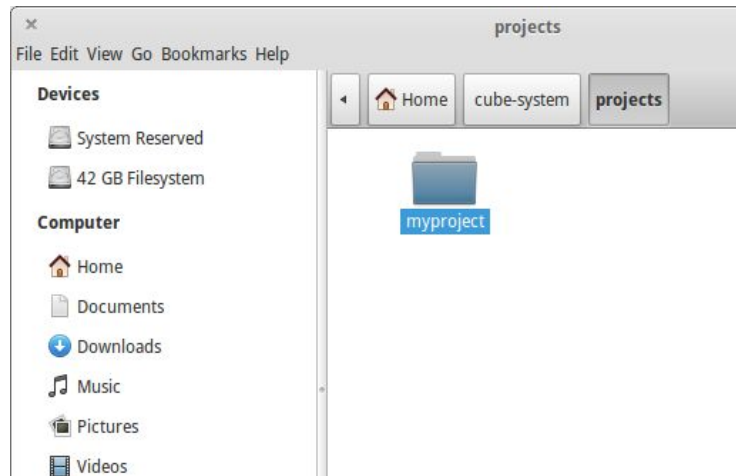
This is it!

Install applications on Linux

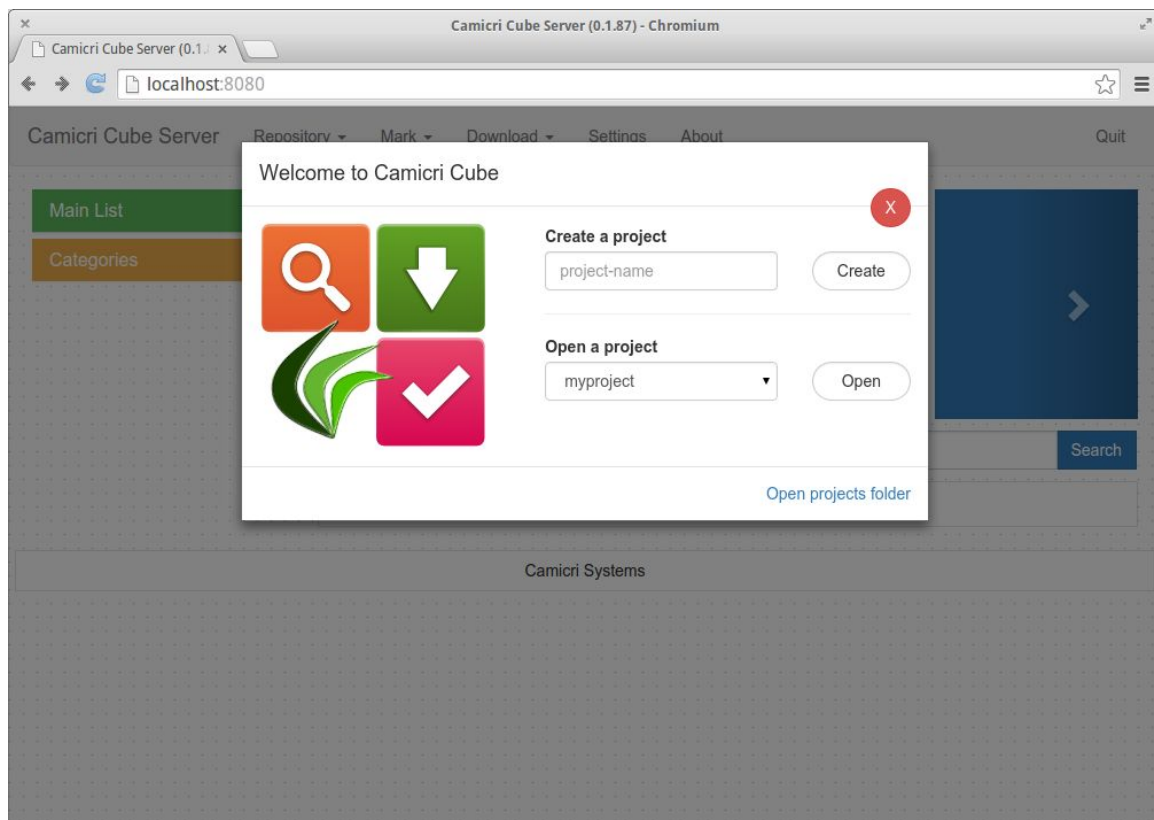
Updating your Linux computer repositories and installing previously downloaded applications on Linux.

1. Open your file browser and go to your HOME directory. Open the 'cube-system' folder, and open the 'projects' folder.

2. Copy the latest 'myproject' from your removable storage device (Flash drive) to the projects folder (Replacing the old one)

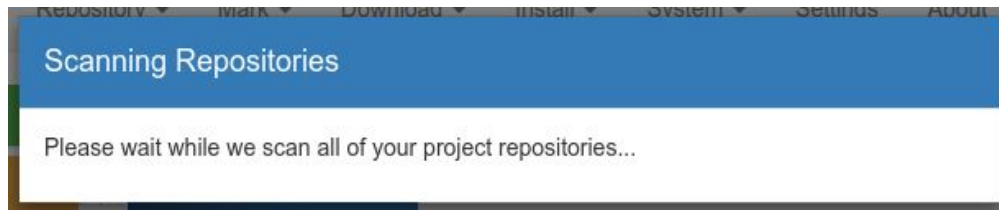


3. Run the Camicri Cube Server (Refer to the first chapter (Step #8) on how to run Camicri Cube Server)

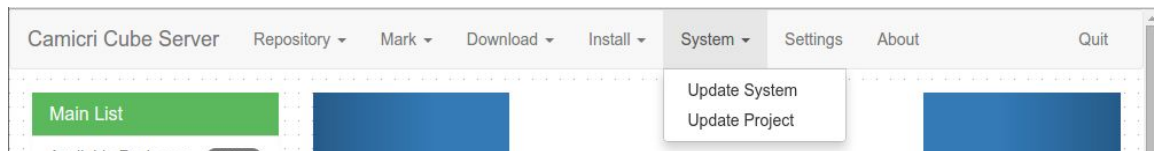


4. Select your 'myproject' in the drop down box and click 'Open'

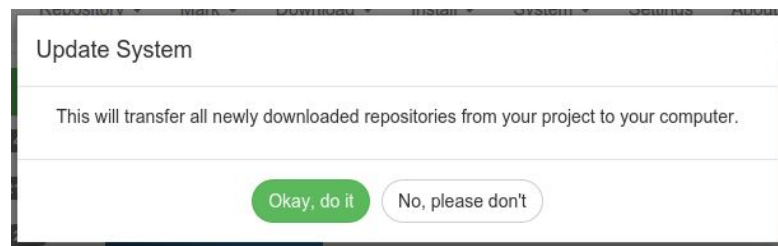
5. Cube will start scanning repositories afterwards.



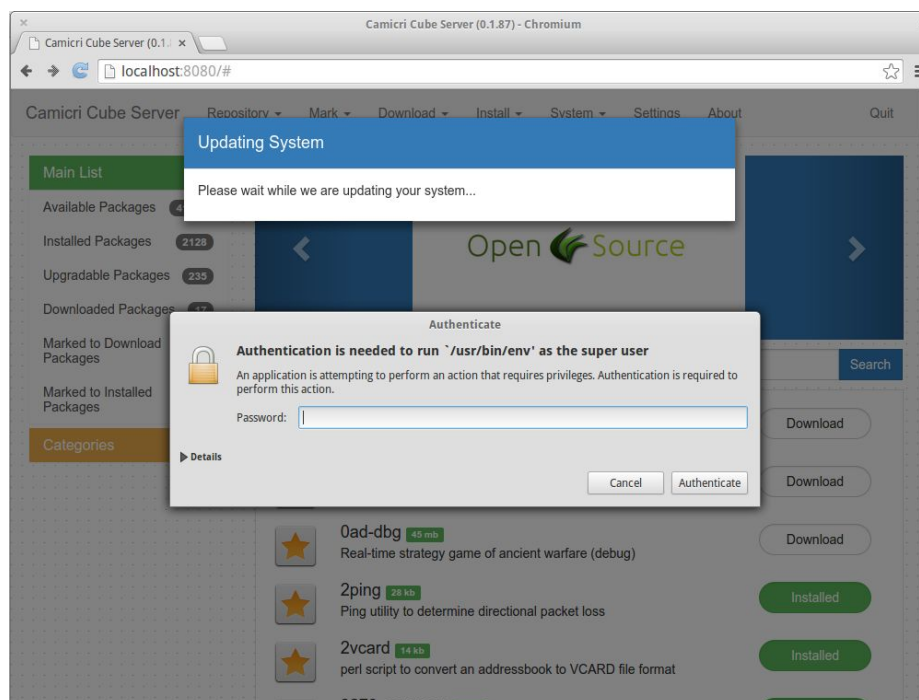
6. Now, since we have downloaded new repositories, we need to inform your computer about these repositories. To do this, in the navigation bar, click 'System => Update System'. Note that if you forgot to do this whenever you download new repositories, installation of applications might fail.



7. It will ask you if you want to continue, click 'Okay, do it'



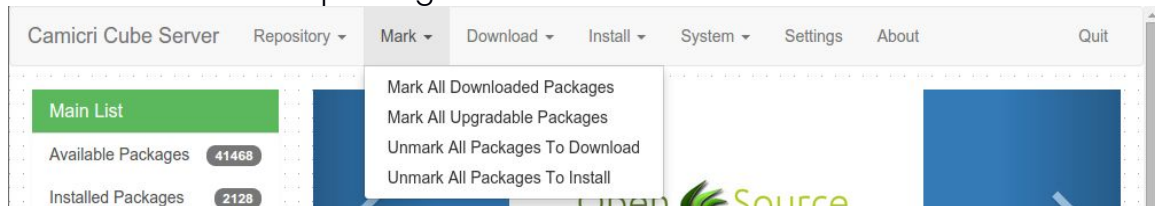
8. It will ask for your password, this is to enable transferring files to your computer, enter your password and click 'Authenticate'.



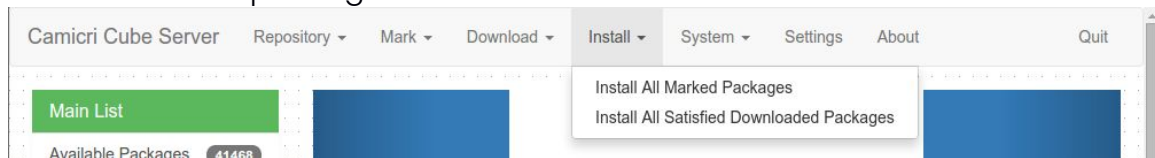
9. After updating your system, it is the time now to install your downloaded packages! You can do it in three different ways:

A. Install all downloaded packages

Mark all downloaded packages

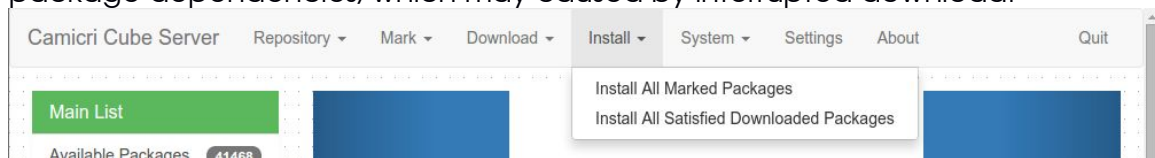


Install all marked packages



B. Install all satisfied downloaded packages

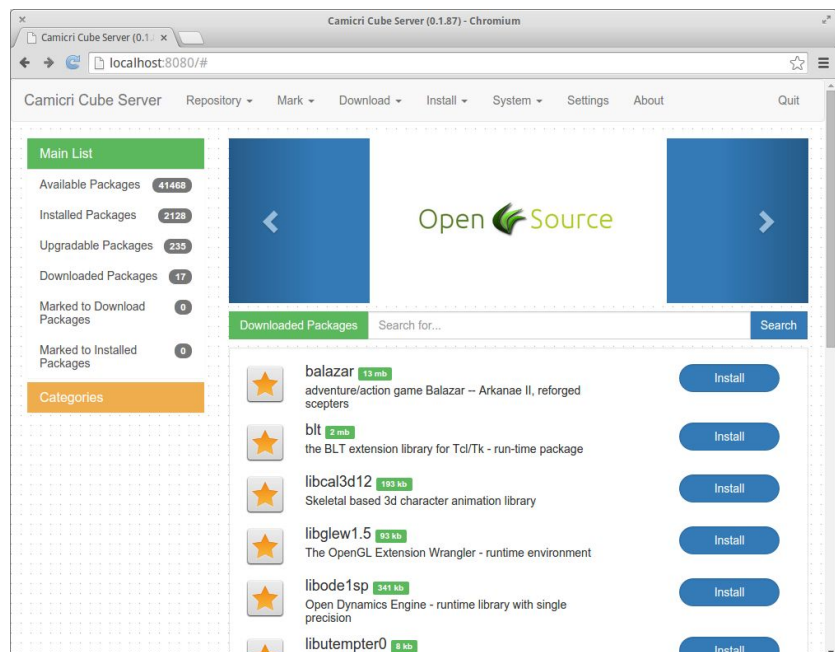
This will install only downloaded applications with complete package dependencies downloaded also. In 'A', you might encounter unsatisfied package dependencies, which may caused by interrupted download.



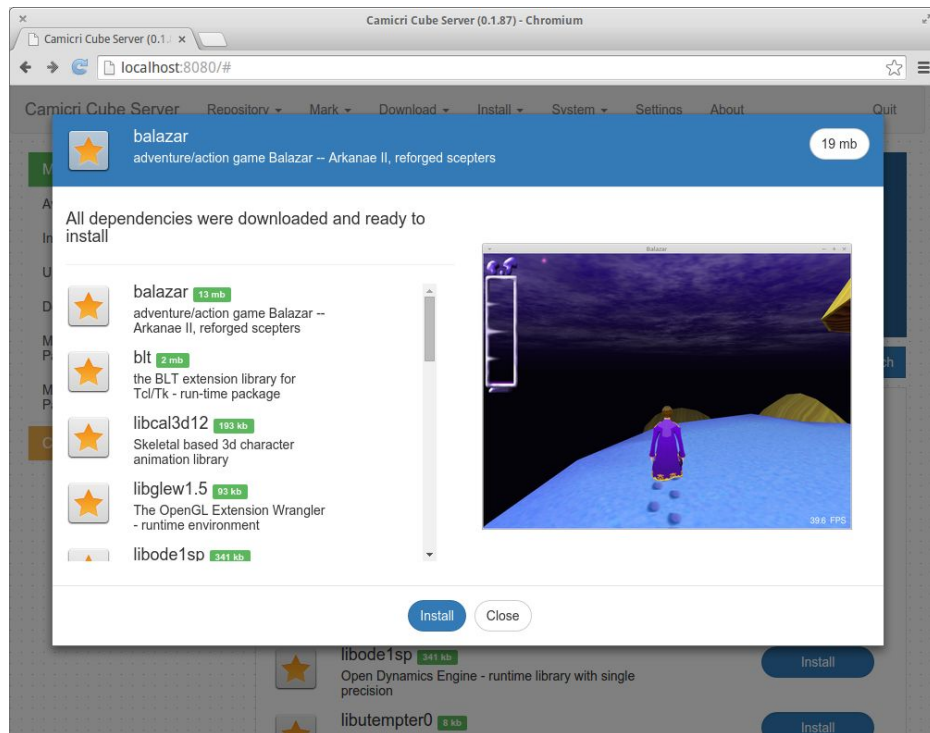
C. Install specific package

Here, I am going to show you how to install a specific package, since I have only downloaded 'balazar'.

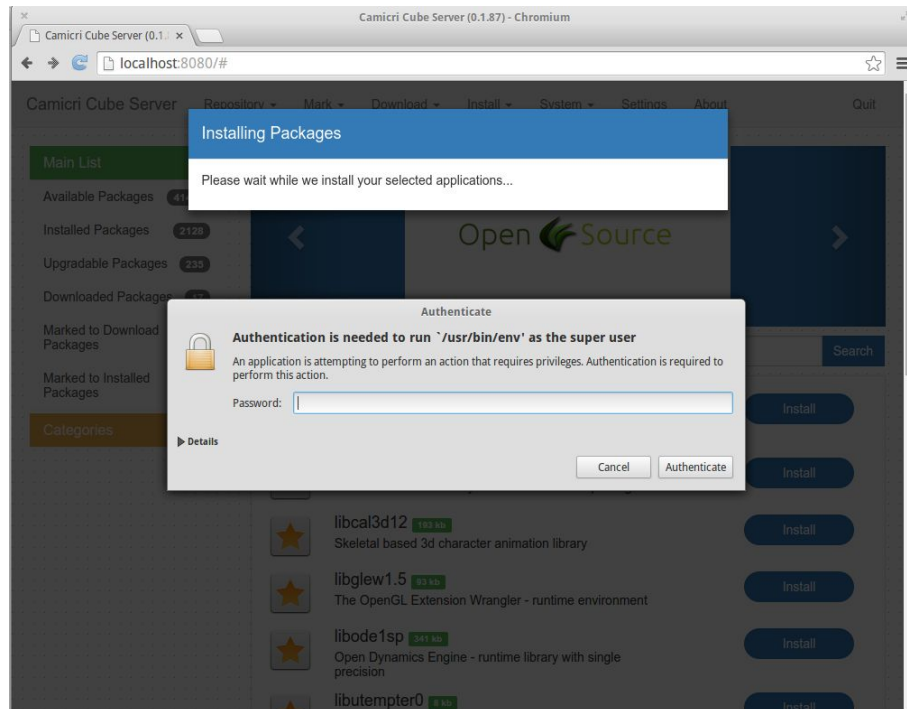
1. In the Main List, click 'Downloaded Packages' this will search for downloaded packages and will be listed in the Application List.



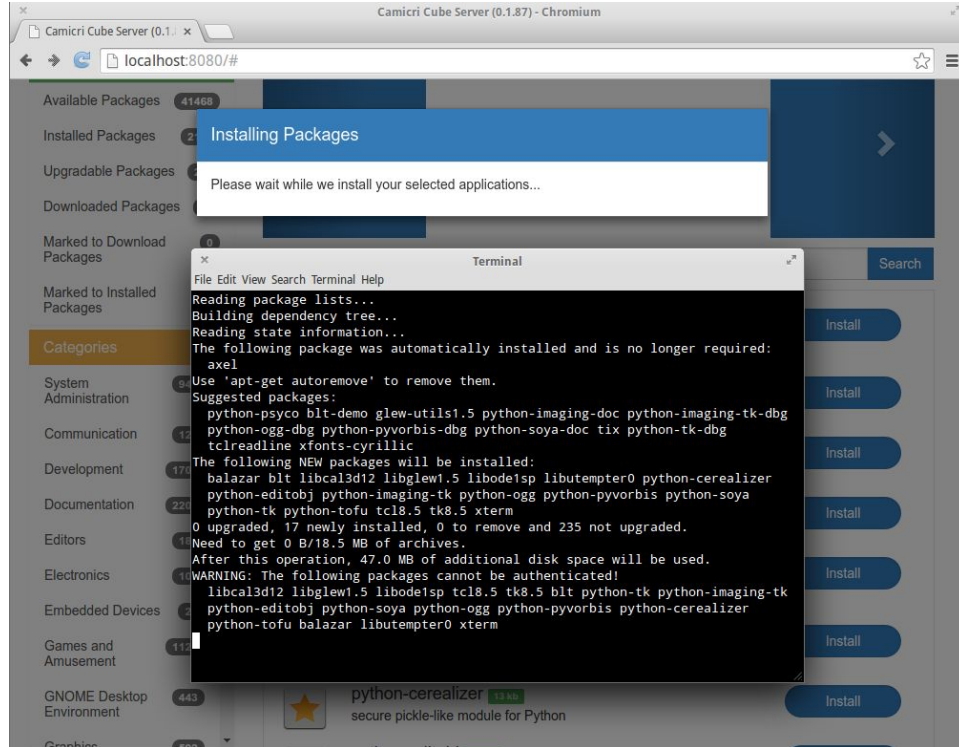
2. In the 'balazar' application item, click the 'Install' button. The preview dialog for 'balazar' will appear.



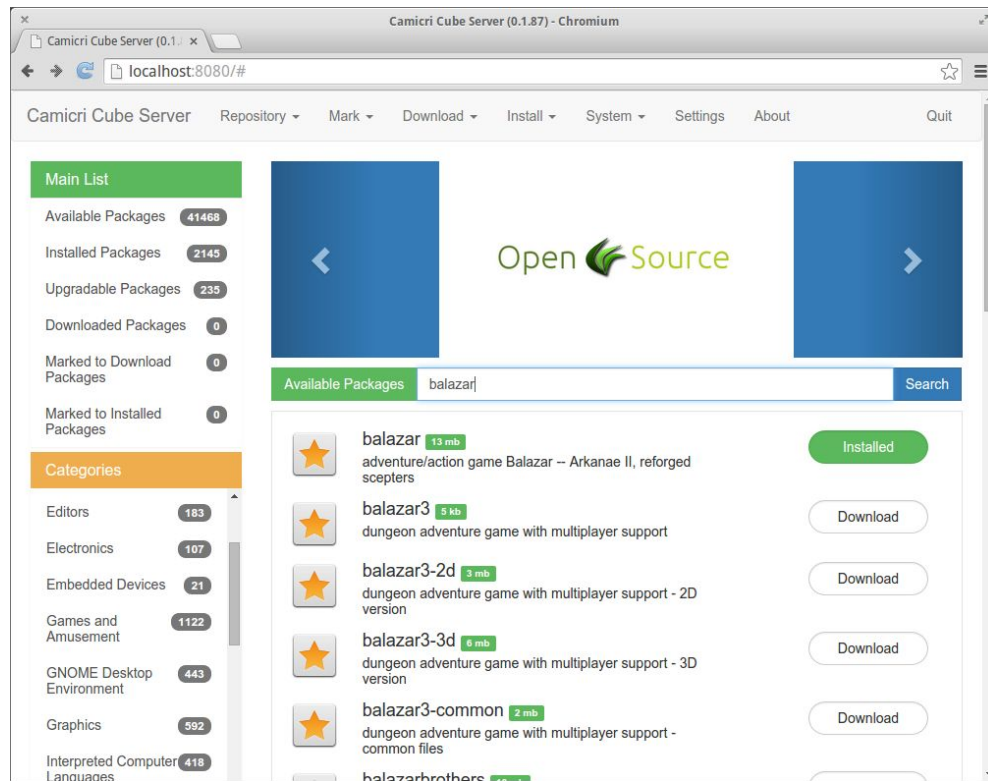
3. Click the 'Install' button. Since installation needs superuser privilege, a password prompt will appear asking for your password. Just enter your password and click 'Authenticate'.



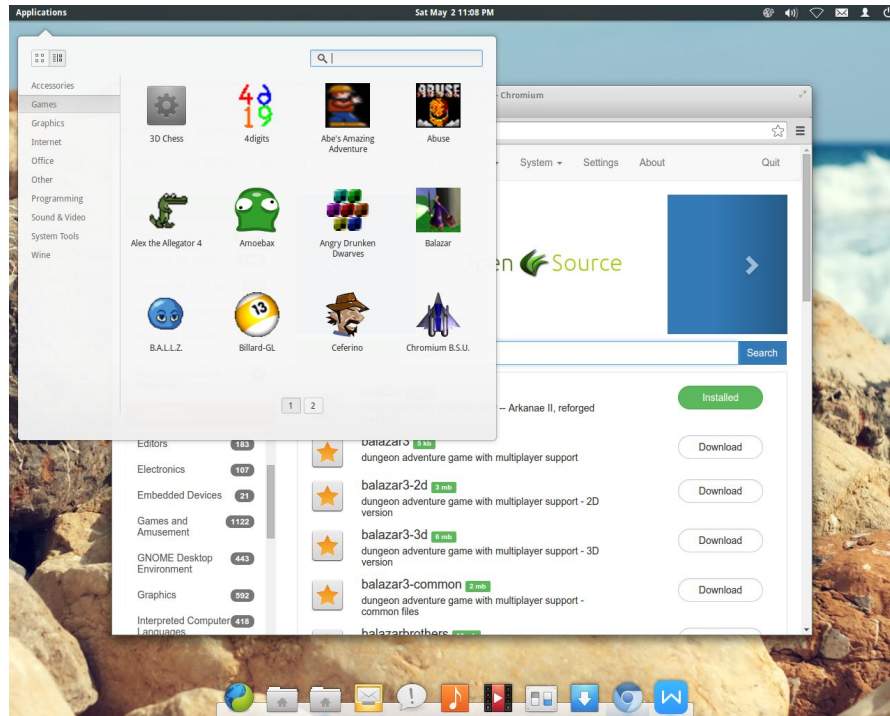
4. After the authentication process, a terminal will appear, showing the installation output. It will automatically close when the installation finishes.



5. After the installation, when you search for 'balazar', it is now 'Installed'.



6. You can now run the 'balazar' application, search it in your application menu or dash :) In Elementary OS, it is located under 'Applications => Games'.



That's it! Balazar is now installed on your Linux computer!
PS. Don't forget to close Camicri Cube Server by clicking the 'Quit' button :)

Appendix

Used Applications (Third Party)

Axel - A light download accelerator for Linux.

COPYRIGHT

Axel is Copyright 2001-2002 Wilmer van der Gaast.

AUTHORS

Wilmer van der Gaast. <wilmer@gaast.net>

gzip, gunzip, zcat - compress or expand files

Copyright © 1998, 1999, 2001, 2002 Free Software Foundation, Inc.
Copyright © 1992, 1993 Jean-loup Gailly

Permission is granted to make and distribute verbatim copies of this manual provided the copyright notice and this permission notice are preserved on all copies.

Permission is granted to copy and distribute modified versions of this manual under the conditions for verbatim copying, provided that the entire resulting derived work is distributed under the terms of a permission notice identical to this one.

Permission is granted to copy and distribute translations of this manual into another language, under the above conditions for modified versions, except that this permission notice may be stated in a translation approved by the Foundation.

Installer creation (Linux)

AppImageAssistant and AppDirAssistant

Copyright (c) 2004-13 Simon Peter <probono@puredarwin.org>
All rights reserved.
Redistribution of this document is permitted only in unchanged form.
Version 2013-04-19

Themes and Resources

Faenza Icons

https://apps.ubuntu.com/site_media/icons

<http://screenshots.ubuntu.com/screenshot>

If you have any comments, questions or encountered a problem, feel free to email me at camicrisystems@gmail.com :)